



EIS/EES Victorian Consultation Plan



'We acknowledge the Traditional Owners of the country on which Marinus Link is proposed in Tasmania, across Bass Strait and in Victoria. We recognise Aboriginal Peoples' continuing connection to land, sea, waterways, sky and culture and pay our respects to all Elders past and present.'

Responsibilities

This document is the responsibility of Marinus Link Pty Ltd, ABN 47 630 194 562 (hereafter referred to as "Marinus Link").

You can contact us with any questions about Marinus Link via our dedicated email and phone line. If you would like to find out more you can also visit the [Marinus Link website](#), email us at team@marinuslink.com.au, or call us on 1300 765 275.

Enquiries regarding this document should be addressed to:

Executive Manager, Stakeholder Relations, Land & Environment
Marinus Link Pty. Ltd.
PO BOX 606
Moonah TAS 7009
Email: team@marinuslink.com.au

Table of Contents

1	Introduction and background	5
1.1	Purpose	6
1.2	The proponent.....	8
2	The project	8
2.1	Project key features	8
2.2	Project benefits	11
2.3	Route selection	11
2.4	Project survey area	12
3	Engagement to date	12
3.1	Phase 1	12
3.2	Phase 2	13
3.3	What we've heard so far	14
3.4	How feedback will be used	16
4	EES consultation (Phase 3).....	17
4.1	Communication and engagement	17
4.2	Communication and engagement pillars	18
4.3	Communication and engagement objectives	18
4.4	Communication and engagement approach.....	19
4.5	Engagement activities and communication tools.....	19
4.6	Landowner engagement	22
4.7	First Nations engagement.....	22
4.8	Data Protection and Privacy	23
5	Key messages.....	23
6	Stakeholders	25
7	Indicative engagement program	31
8	Health and Safety	32

9 Evaluation and reporting33

9.1 Monitoring and responding to feedback.....33

9.2 Consultation report.....34

Abbreviations & Definitions

AEMO	Australian Energy Market Operator
AMSA	Australian Maritime Safety Authority
DEECA	Department of Environment, Energy and Climate Action
DTP	Department of Transport and Planning
DELWP	Department of Environment, Land, Water and Planning
EE ACT	<i>Environment Effects Act 1978</i>
EES	Environment Effects Statement
EIS	Environmental Impact Statement
EIS/EES	Coordinated Environmental Impact Statement and Environment Effects Statement
EIA	Environmental Impact Assessment
EPA	Environment Protection Authority
EPBC ACT	<i>Environment Protection and Biodiversity Conservation Act 1999</i>
HVAC	high voltage alternating current
HVDC	high voltage direct current
IAP2	International Association for Public Participation
ICN	Industry Capability Network
KW	Kilowatt
LANDOWNER	A private property owner directly affected by the Marinus Link route, where an easement is required
MW	Megawatt
RAP	Registered Aboriginal Party
RDV	Regional Development Victoria
RIT-T	Regulatory Investment for Transmission
SETFIA	South East Trawl Fishing Industry Association
STAKEHOLDER	Any person, group or organisation who has an interest in the project
TRG	Technical Reference Group
VSC	Voltage Source Conversion

1 Introduction and background

Marinus Link interconnector is a proposed 1500 megawatt electricity and telecommunications connection between Victoria and Tasmania, supported by transmission network developments in Tasmania's North West. Marinus Link involves approximately 255 kilometres of undersea High Voltage Direct Current (HVDC) cables, approximately 90 kilometres of underground HVDC cable and converter stations in Tasmania and Victoria. Refer to Figure 1 for an illustration of the project key features.

The Victorian Minister for Planning determined in December 2021 that the project requires assessment under the *Environment Effects Act 1978* (EE Act) through preparation of an Environment Effects Statement (EES) for the Marinus Link project (the project).

Marinus Link Pty Ltd (the proponent) will prepare an EES to document the detailed assessment of the potential environmental, heritage, economic and social impacts of the project. The purpose of the EES is to provide a sufficiently detailed description of the project, assess its potential effects on the environment and consider alternative project layouts, design and approaches to avoid and mitigate impacts. The EES will inform and seek feedback from the public and stakeholders. Scoping Requirements for the project, which set out the matters to be investigated and documented in the EES, have been issued by the Minister for Planning in August 2022 and placed on public exhibition. The Scoping Requirements for the project have been finalised by the Minister for Planning in February 2023.

In September 2021, the project submitted referrals under the Commonwealth *Environment Protection and Biodiversity Conservation Act 1999* (EPBC Act). In November 2021, it was determined by a delegate of the Commonwealth Minister for Environment that the project requires assessment and approval under the EPBC Act by undertaking an Environmental Impact Statement (EIS). For the Tasmanian section of Marinus Link, the project is being assessed under relevant Tasmanian legislation. Refer to Figure 1 for an illustration of the jurisdictional boundaries of the project.

When the EIS/EES is complete in accordance with the Scoping Requirements, the EIS/EES will be placed on public exhibition.

The Victorian Minister for Planning will appoint an inquiry to consider the EES and submissions received. The inquiry may hold a formal hearing where the proponent and submitters can speak and present expert witnesses to inform a report to the Minister.

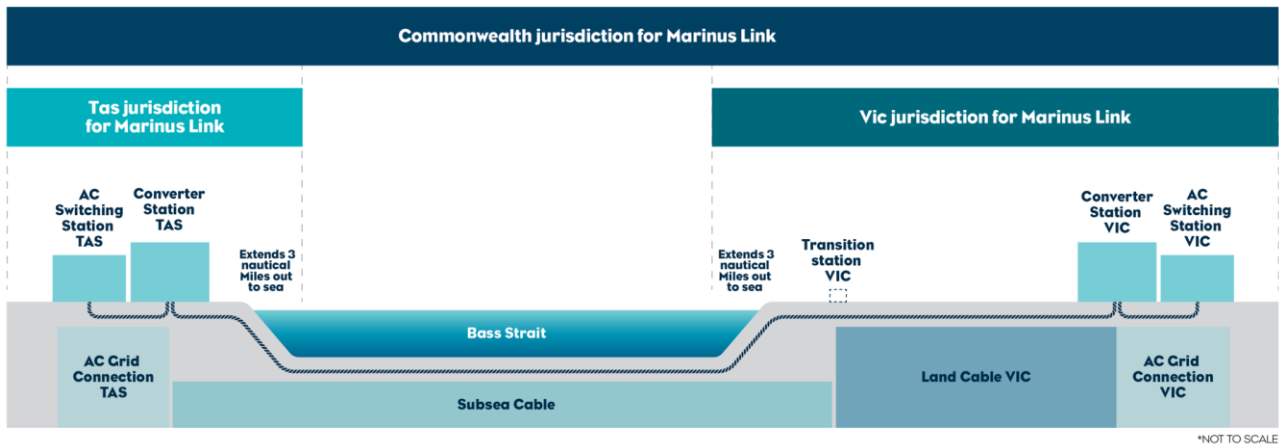


Figure 1: Project key features and jurisdictional boundaries

1.1 Purpose

In accordance with the EE Act, Marinus Link Pty. Ltd. has prepared an Environment Effects Statement Consultation Plan (EIS/EES Victorian Consultation Plan or the Plan), detailing how the project intends to inform the public about the project and potential environmental effects, and how the public and stakeholders will be consulted during the preparation of the EIS/EES.

This Plan details the proposed communication and engagement activities to be delivered in Victoria to support the EIS/EES process, including the key objectives in accordance with the Scoping Requirements. The EES process also requires that the public and stakeholders are provided with an opportunity to provide feedback on the project assessment. Further details on this process and opportunities for input can be found here: <https://www.marinuslink.com.au/environmental-assessment-and-planning-processes/>.

The development of the plan was guided by the following legislation and guidelines:

- *Environment Effects Act 1978 (Vic)*
- *Environment Protection and Biodiversity Conservation Act 1999 (Cth)*
- *Equal Opportunity Act 2010 (Vic)*
- *Charter of Human Rights and Responsibilities Act 2000 (Vic)*
- *Privacy Act 1988 (Cth)*
- Victorian Government Accessible Communications Guidelines 2014 (Victorian Government, 2014a)
- Victorian Government Communications Guidelines 2014 (Victorian Government, 2014b)
- Public Participation in Government Decision-making (Victorian Auditor-General's Office, 2015)
- Clean Energy Council Community Engagement Guidelines for Building Powerlines for Renewable Energy Developments
- Clean Energy Council Guide to Benefit Sharing Options for Renewable Energy Projects
- Australian Energy Regulator Better Resets Handbook

- IAP2 Core Values and Public Participation Spectrum

The goals of EES/EIS engagement is to help meet the objectives of the EES process. These objectives of the EES process include:

- To provide for the transparent assessment of potential environmental effects of proposed projects, in the context of applicable legislation and policy, including principles and objectives of ecologically sustainable development.
- To provide timely and integrated assessments of proposed projects to inform relevant decisions, in the context of coordinated statutory processes.
- To ensure proponents are accountable for investigating potential environmental and related effects of proposed projects, as well as for implementing effective environmental management measures.
- To provide public access to information regarding potential environmental, cultural and social effects as well as fair opportunities for participation in assessment processes by stakeholders and the public.
- To provide a basis for monitoring and evaluating the effects to inform management of the works and improve knowledge.

The specific goals of EES engagement include:

- Informing the community and stakeholders about potential impacts from the project.
- Creating multiple opportunities for the community and stakeholders to provide feedback about the project and potential impacts.
- Identifying issues and opportunities important to the community and stakeholders, which can be used to inform construction and impact mitigations.
- Ensuring the project can meet the requirements under relevant laws and regulations.

The scope of this Plan addresses the EES process in Victoria which includes up to three nautical miles off the Victorian coastline. This Plan excludes waters beyond three nautical miles from the coastline, which come under Commonwealth jurisdiction, although, a combined approach to engagement will be undertaken in Victoria to address the Commonwealth jurisdiction.

The Plan will be reviewed by DTP and the Technical Reference Group (TRG), and will be published on the Marinus Link project page at: <https://www.planning.vic.gov.au/environment-assessment/browse-projects/projects/marinus-link>.

The Plan will be refined as necessary to address changing community needs and requirements throughout the EES process. The EES Consultation Plan will apply to the end of the public exhibition phase of the EES process.

Further information on the EES process is available at www.planning.vic.gov.au/environment-assessment/what-is-the-ees-process-in-victoria.

1.2 The proponent

The design and approvals phase of Marinius Link is being progressed by Marinius Link Pty Ltd, a wholly owned subsidiary of TasNetworks, which is a wholly owned government business enterprise of the State of Tasmania. Marinius Link is being funded by the Australian, Victorian and Tasmanian governments.

2 The project

2.1 Project key features

Marinius Link is a proposed 1500 megawatt (MW) high voltage direct current (HVDC) electrical interconnector between North West Tasmania and the Latrobe Valley in Victoria.

Marinius Link will use Voltage Source Conversion (VSC) technology, with two converters located at each end of the project to manage the total electricity supply. VSC technology offers more stability and security for power supply and will help meet the demands of the future energy grid. Approximately ten hectares of land will be required at each end of the project to accommodate the converter stations and their construction. In Tasmania, the converter stations are proposed to be located at Heybridge, just east of Burnie, while in Victoria, locations in the Hazelwood area are being assessed.

The project involves approximately 255 kilometres of undersea High Voltage Direct Current (HVDC) cable and approximately 90 kilometres of underground HVDC cables in Victoria. It also includes converter stations in Tasmania and Victoria.

Refer to Table 1 for an overview of the project key features. Refer to Figure 2 for for a project key features illustration. Refer to Figure 3 for the proposed Victoria cable alignment.

Table 1: Project key features

Tasmania	Marine (Commonwealth)	Victoria*
<ul style="list-style-type: none"> • Converter stations and switching station at Heybridge, near Burnie in north west Tasmania. • Shore crossing in Tasmania adjacent to the converter station. 	<ul style="list-style-type: none"> • Subsea cables from Heybridge, Tasmania to Waratah Bay in Victoria. 	<ul style="list-style-type: none"> • Underground shore crossing at Waratah Bay. • Potential transition station where the subsea cables will connect to the land cables in Victoria. • Land cables in Victoria from the potential transition station

		<p>to the converter station site in the Hazelwood area.</p> <ul style="list-style-type: none"> • Converter stations and switching station in Victoria, where the project will connect to the existing 500 kV Victorian transmission network.
--	--	---

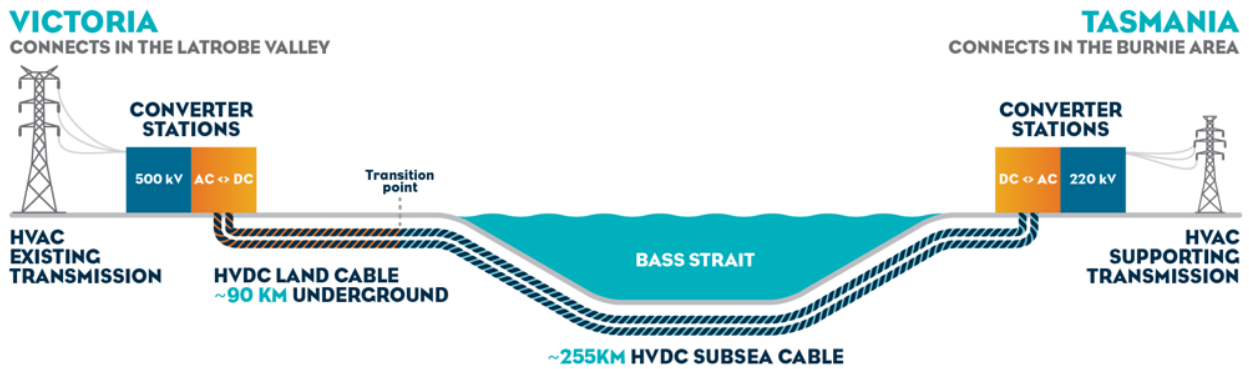


Figure 2: Project key features illustration

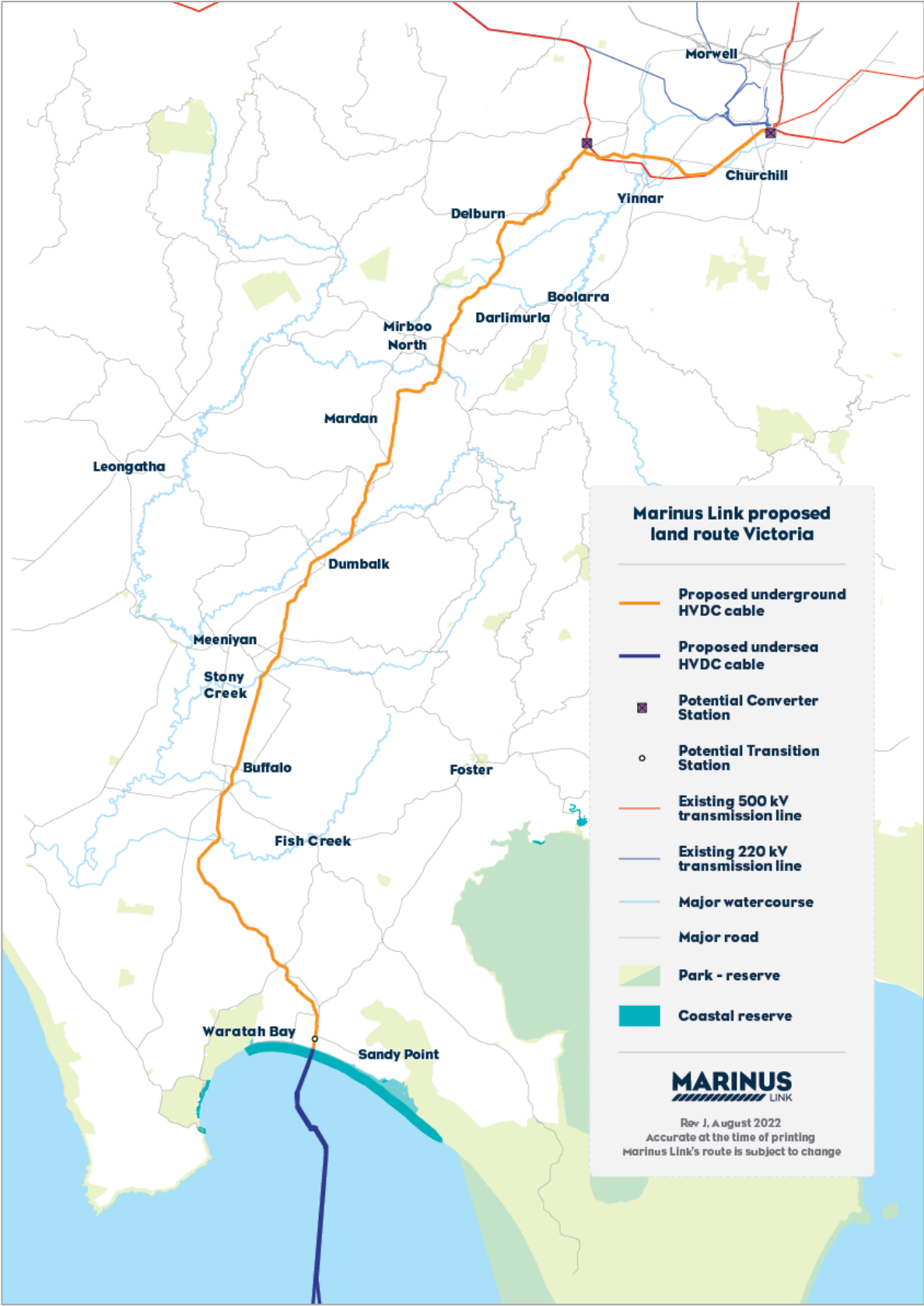


Figure 2: Proposed Victoria cable alignment

2.2 Project benefits

Marinus Link will unlock savings of at least 140 million tonnes of CO₂ by 2050, the equivalent of taking approximately a million petrol/diesel cars off the road. 1500 megawatts equates to supplying 1.5 million Australian homes with electricity at any given time.

The benefit of further interconnection is that it enables energy from a diverse range of generation sources to move efficiently to where it is most needed in a safe, secure and affordable way. The project will provide access to Tasmania's cost-competitive renewable energy and storage resources.

The Marinus Link project commenced in late 2017 as a full feasibility and business case assessment. It completed a three year regulatory investment test for transmission in 2021 and is now half way through the design and approvals phase. A final investment decision is anticipated in late 2024 with construction of the first stage 750MW scheduled to commence in 2025.

Engagement with the Australian Energy Market Operator (**AEMO**), the Victorian transmission network planner, and AusNet Services, the transmission asset owner, identified connection into the Latrobe Valley as the best option to achieve the full benefits of the project. The Hazelwood Terminal Substation in the Latrobe Valley and the adjacent transmission network have enough capacity to accommodate future generation, storage and load in the area.

In order to meet transmission network growth requirements forecast by the Australian Energy Market Operator (AEMO), and to optimise the project economics, Marinus Link is proposed to be built in two stages. Each stage will consist of a 750 MW HVDC Link between Tasmania and Victoria. Stage 1 of the project is due to be in service in 2028-29, and Stage 2 in 2030-31.

2.3 Route selection

When designing a preferred route for Marinus Link, environmental, social, cultural, economic and social impacts are considered.

The proposed route for Marinus Link has been developed following the culmination of a comprehensive route and site selection process that has considered technical, environmental, cultural and social constraints.

The project considered a range of favourable locations to connect the Tasmanian power system with the Victorian power system. This is a fundamental first step in electricity infrastructure design, to ensure safe, reliable and secure connection. Then the most cost-effective and technically feasible corridor from point to point was considered.

Cost effectiveness and constructability are two critical aspects, noting the need to meet energy market rules, reduce risk and cost, and meet consumer needs and expectations for affordable and reliable electricity.

Avoidance where possible of significant impacts on existing infrastructure, environmentally sensitive areas including threatened species habitat and threatened ecological communities, and land use is a key objective and overlay for the project.

2.4 Project survey area

A survey area of 220m wide is being assessed for the land cables in Victoria, providing flexibility to allow the ultimate siting and design of the cables and any associated assets to respond to values present and avoid potential impacts to the environment and landowners, where practicable. During construction, a corridor of 20–36m wide is expected to be required. The final location of Marinus Link infrastructure is expected to be within this survey area. The final alignment and location of infrastructure within the survey area will be informed by detailed environmental and cultural heritage assessments, ongoing engineering investigations, and landowner negotiations.

3 Engagement to date

Marinus Link understands the importance of community engagement and the community support that will be necessary for successful project delivery. The project has been engaging with stakeholders and the community in Victoria since early 2018. To date, the project has consulted with:

- Local councils
- Commonwealth and State government agencies
- Traditional Owner Groups in Victoria
- Landowners
- Community groups
- Local communities
- Members of Parliament (State and Commonwealth)
- Industry organisations including SETFIA and the Gippsland Trade and Labour Council
- Local economic authorities and industry bodies, including the Latrobe Valley Authority, Committee for Gippsland, Gippsland Climate Change Network, South Gippsland Landcare Network, GROW Gippsland, Federation University, and TAFE Gippsland.

3.1 Phase 1

The first formal phase of engagement took place over an 18-month period between July 2018 and December 2019. The objectives of this phase of engagement were to:

- Raise awareness about the project

- Support the Feasibility Study, Business Case Assessment and Regulatory Investment for Transmission (RIT-T) processes. The RIT-T is a cost-benefit analysis overseen by the Australian Energy Regulator (AER). It assesses the economic and technical impact of, and preferred timing for, all major network investments in the national energy market (NEM). The RIT-T process ensures regulated transmission investment decisions are in the long-term interests of customers.

Engagement throughout this phase included meetings, workshops and information sessions, as well as regular print and digital communications. A summary of engagement is available on the [Marinus Link website](#).

In June 2021, the [Marinus Link Project Assessment Conclusions Report](#) (PACR) was published, demonstrating that the project satisfies the regulatory investment test for transmission.

3.2 Phase 2

The onset of Covid-19 and regional bushfire events in early 2020 delayed active onground engagements in Victoria. There were a number of attempts to hold community and landowner engagements, that needed to be rescheduled or deferred. In that intervening period, Marinus Link joined local radio station Gippsland FM (104.7) to give an update on progress and to signal up coming engagements. In November 2020, Marinus Link started engagement with Gippsland landowners on the proposed route to introduce Marinus Link and consult around the proposed route. Engagement focused on face-to-face meetings, with several landowners also taking the opportunity to drop in at the public community information sessions and webinar.

Engagement with the broader Victorian public started in early 2021 and focussed on raising awareness of the project, capturing feedback on the proposed route and promoting the benefits for Victoria. Awareness raising activities included four pop-up information sessions (at Sandy Point, Mirboo North, Meeniyah and Morwell) and a stall at the Farm World Exhibition at Lardner Park in Gippsland, a community webinar and the launch of an interactive map where community members could leave feedback.

From August 2021, the engagement focus shifted to raising awareness about the upcoming environmental planning and assessment referrals. COVID-19 restrictions continued to limit on-the-ground engagement, so engagement activities were undertaken virtually. Marinus Link worked with local Gippsland organisations to participate in their existing online meetings and organised webinars for the broader community and environmental and community groups.

The project returned to face-to-face engagement in late 2021, with Marinus Link team members attending local community markets in Traralgon, Leongatha and Mirboo North (in early 2022) to raise awareness about the project and the planning and assessment process.

Marinus Link established a Gippsland Stakeholder Liaison Group in late 2021, appointing Jane Leslie as independent Chair.

Due to the specialised technical requirements for the project and private property impacts throughout the design and approvals stage of the project, it was determined that a Stakeholder Liaison Group was the preferred way for Marinus Link to share information, issues and ensure the project aligns with key regional priorities.

This group has met five times (as at December 2022) and meets quarterly to share information, issues and ensure the project aligns with key regional priorities.

Regular meetings and briefing sessions have also taken place with state government authorities, First Nations groups and industry organisations.

The first two phases are completed. The approach to consultation through to the completion of the approvals process is provided in Section 4.

The purpose of the next phase of consultation during the EIS/EES preparation is to:

- Inform the community about the EES process and the timeline applicable to the project
- Share the key aspects of the draft EES technical studies
- Provide opportunity for the community to provide input and receive information on the EES process
- Outline opportunities for community involvement with the project

3.3 What we've heard so far

Over the course of our engagement activities, people have provided feedback on themes that are most important to them.

Economic development

What we heard

Stakeholder engagement to date has indicated the community wants to see capacity development within the region to ensure the project workforce can be sourced locally.

Many of the stakeholder groups we spoke to also referenced the number of projects taking place in Gippsland. There was a broad consensus that a benefits sharing scheme would help compensate the communities most impacted by the project.

How we're responding

The project is committed to working with Australian businesses to secure the services and materials needed to deliver a project of this size. Marinus Link is currently leveraging the Industry Capability Network's (ICN) supply chain portal to receive Expressions of Interest from businesses and suppliers across Australia,

including those based in the Gippsland region. Marinus Link has also become a member of GROW Gippsland and Social Traders to connect with local suppliers and help build capability within the local supply chain.

Marinus Link recognises investing in renewable energy in the region also has the potential to create significant benefits for Gippsland communities and there is growing sentiment in the region that communities most impacted by projects should receive additional benefits from the project. Several renewable energy projects have established community benefit sharing schemes, which provide support to local initiatives, groups or sporting clubs.

Marinus Link has developed a Sustainability Framework which will guide the priorities and objectives for a Community Benefits Sharing Program.

Marinus Link will begin consultation with stakeholders and the community to help design and implement the community benefits sharing scheme.

Landowner impacts

What we heard

Private property owners have raised concerns relating to how an easement may impact future agricultural land use, biosecurity on farms during construction and how works may impact organic certifications.

How we're responding

The project continues to engage with potentially impacted landowners to micro-site the route and collaborate with them on property management plans, to ensure their concerns around construction impacts, biosecurity and organic certifications are adequately addressed. We have communicated clearly and regularly our approach to land access, land survey activities, compensation and acquisition, developing and sharing landowner information packs, and briefing/ liaising with local and state authorities, Members of Parliament, the National Energy Infrastructure Commissioner and the Essential Services Commission.

Environmental impacts

What we heard

The broader community has indicated they are interested in understanding impacts to vegetation, animal habitat and the marine environment from both the construction and operation of Marinus Link.

Our engagement to date has also indicated the importance of explaining how construction impacts will be managed and how we the project will minimise impacts to the environment.

How we're responding

Marinus Link has completed preliminary studies, to identify environmental values within the assessment survey area. The project has been optimised to avoid impacts, where possible, on existing infrastructure and land use, environmental and heritage values including threatened species habitat and threatened ecological communities. The project will continue to be refined and finalised following further investigations, as well as engagement with landowners, community and stakeholders. Where feasible, project infrastructure can be micro-sited around identified values and to minimise potential impacts.

Marinus Link will present findings of EES technical studies including key issues such as ecology, noise and vibration, traffic and transport, agriculture and marine and will provide the opportunity for public and stakeholder feedback as part of the EES process.

3.4 How feedback will be used

To build and maintain trust, the project will clearly articulate what can be influenced and the promise we are making to stakeholders and the community about their level of involvement using the IAP2 spectrum.

Landowner, community and stakeholder feedback is being used in the following ways:

- **Cable route selection** – Feedback from landowners will inform the micro-siting of the final route selection and the location of infrastructure such as joint pits and access tracks.
- **Planning and environmental assessment** – Feedback from landowners, the community and stakeholders will enrich our understanding of the local environment, potential issues and opportunities. All feedback will be considered when developing scoping impact assessments and minimising potential impacts throughout the EES process. Ongoing engagement will help us to better develop accessible and accurate information important to the community and stakeholders when addressing concerns. Engagement locally will also help us to maximise the value of our community benefit sharing program.
- **Construction and operation** – The planning and environmental assessment stage will assess impacts from the construction, operation and decommissioning activities. The project will engage with the community to understand how impacts can be minimised. This process will include understanding how the community uses the local area and making changes to the program or construction set-up where possible. For example, the project may work with farmers to understand when they undertake harvest activities and what roads they use. This would inform management measures so impacts to these roads are programmed around key harvest activities.

4 EES consultation (Phase 3)

4.1 Communication and engagement

Marinus Link recognises that public participation is essential for achieving high quality outcomes for the community and stakeholders. The aim of this Plan is to detail how communities and stakeholders can participate in the development of the EIS/EES.

The International Association for Public Participation (IAP2) is the internationally recognised organisation for advancing public involvement and participation in government programs and services. The IAP2 spectrum of public participation assists with decisions about how to work with project stakeholders. The spectrum moves from left to right – with a progressively increasing level of public participation and involvement. To build and maintain trust, the project will clearly articulate what can be influenced and the commitments we will make to stakeholders and the community regarding their level of involvement using the IAP2 spectrum.

Table 2 summarises the IAP2 spectrum for community engagement.

Table 2: IAP2 spectrum

Inform	Consult	Involve	Collaborate	Empower
Provide balanced and objective information to assist understanding of the problem, opportunities and solutions	Obtain feedback on analysis, alternatives and decisions	Work directly with stakeholders to ensure their aspirations are understood and considered	Partner with stakeholders in each aspect of the decision including development of alternatives and identification of the preferred solution	Place final decision-making in the hands of stakeholder

Many aspects of the project are largely set (e.g. route and study corridors and asset configuration and technology) and we will continue to actively *Inform*. There are aspects of the project where we are, and will continue to, actively *Consult*, for example survey data results and some construction methods. An area like micro-siting of assets is where we will aim to *Involve* landowners. The development of a community benefits sharing scheme also presents an opportunity to *Involve* stakeholders. We seek to *Collaborate* with government authorities, industry bodies, chambers of commerce, councils and others on skills and workforce capacity building, and local economic participation. Regulatory bodies governing the energy market, land use planning and environmental and cultural impact assessments are *Empowered* and the ultimate decision maker against relevant policies and legislation.

4.2 Communication and engagement pillars

Figure 3 illustrates the four key pillars that guide the way in which we engage with key partners, landowners and the community.

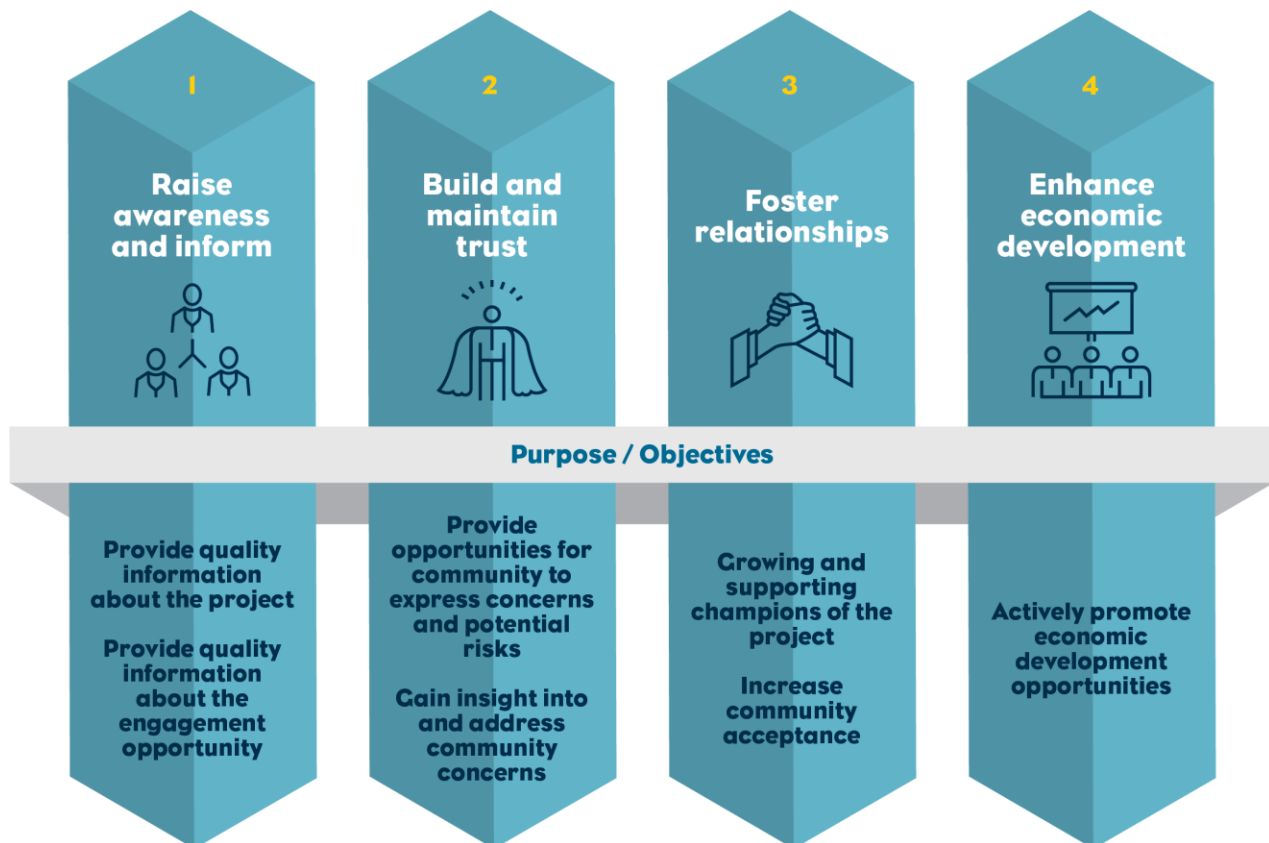


Figure 3: Communication and engagement pillars

4.3 Communication and engagement objectives

The goals of EES engagement will be delivered by:

- Providing information about the project through multiple communication channels, including print, digital, advertising and through face-to-face engagement.
- Fully identifying interested stakeholders and their preferred methods of engagement.
- Helping people understand the project and participate, by ensuring communication materials are clear and accessible.
- Providing multiple opportunities for engagement and feedback during the project, including throughout the EIS/EES process.
- Providing opportunities for individuals to raise concerns about specific issues and provide feedback on proposed measures to address these concerns

- Explaining how community and stakeholder issues and feedback are being captured and used to inform project development and assessment.

4.4 Communication and engagement approach

During the preparation of the EIS/EES from August 2022, communication and engagement will relate to key themes, topics and interests and will align with the development of EES technical studies and project development. Table 3 identifies the key themes of the proposed information sessions, which will also include a general project update and introduction to the EES process, technical studies and EES development.

Table 3 outlines the public information session key themes.

Table 3: Public information session key themes

Topic	Theme
The project	Overview Funding The cable alignment Converter station Rationale
EES Process	EES Process
Construction	Noise and vibration Traffic and transport
Agriculture	Biosecurity impacts Land use impacts
Biodiversity	Flora and fauna impacts Marine ecology

4.5 Engagement activities and communication tools

A range of engagement activities and communication tools will be used to give stakeholders as much opportunity as possible to participate in the consultation and engagement process for Marinus Link. These activities and communication tools are important in establishing a two-way conversation between the project and the community.

An overview of key engagement activities is provided in Table 4 and key communication tools is provided in Table 5.

Table 4: Engagement activities

Pop-up stall	Pop-up information stalls will be used at community events and markets to reach a wider audience. The stalls will be staffed and contain key project information. Visitors will also be able to provide feedback on the project.
Information sessions	Information sessions will be held both virtually and in-person (where possible), around key milestones in the planning and assessment process. They will give local stakeholders and the general public the opportunity to interact with project staff and provide feedback on the project.
Presentations	The project will provide presentations to community and representative groups as requested. Presentations provide the opportunity for more targeted engagement and will primarily be used for schools engagement or special interest groups. Presentations can be requested via the contact us page on the Marinus Link website or through relevant Gippsland SLG members.
Email and phone	Email and phone will be used to communicate directly with key stakeholders as required. All interactions will be recorded in a stakeholder management system.
Meetings	Meetings continue to be used for engagement with key stakeholder organisations and directly impacted landowners. Depending on current COVID-19 advice, virtual meetings may be used in place of face-to-face. Marinus Link has also developed relationships with established organisations in the region. We will coordinate with these groups to piggyback on existing meetings and events to provide project updates and communications.
Surveys and feedback forms	Surveys and feedback forms will be used to collect data to help measure effectiveness of engagement and communication activities and to help identify areas of interest and preferred engagement methods. Surveys and feedback forms will be most commonly used after engagement activities, like information sessions and webinars to gather information on what can be improved and to identify what stakeholders want to hear more about.
Culturally and Linguistically Diverse (CALD)	The project will work with local councils, Gippsland Multicultural Services and Centre for Multicultural Youth Gippsland Branch to tap into the local CALD community and provide project information and details on engagement opportunities.
Gippsland Stakeholder Liaison Group (GSLG)	Key stakeholders have been invited to join the Gippsland Stakeholder Liaison Group. It will provide a forum for the project to: <ul style="list-style-type: none"> – Provide updates and information on the project – Hear feedback and concerns from key stakeholder groups, which will be used to influence construction methodology (where possible), as well as communication and engagement activities – Detail how marine and other environmental impacts are being managed – Communicate expected construction methodology, impacts and mitigations. Marinus Link GSLG membership and meeting minutes are published on the website: https://www.marinuslink.com.au/gippsland-stakeholder-liaison-group/
Technical Reference Group (TRG)	Convened by DTP to facilitate advice from government agencies with a statutory, policy or technical interest in the project to DTP and the project team during the preparation of the EIS/EES. The project team will work collaboratively with the TRG.
Workshops	Workshops will be held, as required, to engage with stakeholders on complex topics or to help shape engagement approaches. The project may engage groups and organisations

	with local or specialised knowledge to provide advice on specific topics i.e. economic development, marine environment etc.
Consumer Advisory Panel	As part of the engagement on a revenue-setting proposal for the Australian Energy Regulator, the project has set-up a Consumer Advisory Panel. The panel will be a combination of consumer groups and industry organisations who will provide advice and feedback on possible revenue approaches. The project will share project information with the panel, including communicating opportunities for community consultation.

Table 5: Communication tools

Newsletters	A quarterly newsletter will be delivered to up to 3,200 stakeholders across the project area with information about the project, upcoming activities and information on how stakeholders can provide feedback about the project. The newsletter will be delivered via print and email. Emailed newsletters are distributed to individuals who have subscribed to e-updates. Copies of the newsletter will also be sent to local libraries and provided to local businesses where feasible.
Fact sheets	A series of fact sheets will be created for the project. Common fact sheet topics may include: <ul style="list-style-type: none"> – Planning assessment and approvals processes – Managing environment and heritage – Managing marine impacts – Expected construction methodology and impacts Other fact sheets may be developed as required to respond to frequently asked questions. Fact sheets will be available at in-person engagement activities and on the Marinius Link website.
Advertising	Advertising will be placed in local newspapers and through social media and radio as required to promote engagement opportunities or key consultation activities. Community notice boards may also be used.
Maps	Maps will be used to communicate information about the proposed alignment as well as relevant project information. Maps will be available online and at pop-ups and information sessions.
Photos and videos	Photos and videos maybe used to demonstrate certain site activities or summarise information about the project. Project visualisation techniquess will also be developed to provide a virtual illustration of the project so the public can better understand what Marinius Link will look like, it's scale and location in the context of the landscapes and seascapes.
Engagement reports	Reports will be published following engagement activities summarising what we have heard and how it will be considered as part of the project.
Website	The website will be updated regularly with project information. Other communication tools may direct stakeholders to the website for more detailed information. Details on how to reach out to the project are also included on the website https://www.mariniuslink.com.au/contact-us-2/
Social media posts	Social media posts across various platforms, including LinkedIn, Facebook and YouTube will be used to promote engagement opportunities and key milestones across the project, including dates for engagement activities and opportunities for engagement, and the public exhibition of the EIS/EES
Email updates	The project will maintain an email mailing list and information on project milestones and opportunities for engagement will be included in email updates.

SMS service

The project will work with the South East Trawl Fishing Industry Association to keep its members up to date on project activities and engagement opportunities via their member SMS service.

4.6 Landowner engagement

An easement is needed in Victoria for the transmission infrastructure that will run underground between Waratah Bay and the Hazelwood area. A dedicated team of qualified and experienced land agents are working with landowners to negotiate access agreements for environmental, cultural heritage and geotechnical surveys. Following land valuations and compensation considerations, fair and reasonable negotiations will begin with landowners regarding easement rights and any acquisitions in order to construct and operate the transmission infrastructure. Each landowner has a dedicated landowner liaison officer.

4.7 First Nations engagement

Marinus Link acknowledges the Traditional Owners of the Country on which Marinus Link is proposed in Tasmania, across Bass Strait and in Victoria. We recognise the opportunities, challenges and impacts the project may present and are committed to listening to and working with Traditional Owners throughout the projects development.

In the Gippsland region, Marinus Link is focused on building trusting relationships with Traditional Owners including the Boonwurrung Land and Sea Council, Bunurong Land Council Aboriginal Corporation and Gunaikurnai Land and Waters Aboriginal Corporation. Marinus Link is engaging with all three parties equally and will seek to ensure a high and genuine level of participation throughout all project activities.

Marinus Link has appointed Aboriginal Engagement Advisors in recognition of the importance of building strong and respectful relationships with Traditional Owners and Community and has established the Marinus Link Aboriginal Advisory Group, which is made up of Traditional Owners and Marinus Link people. The Group formed in late 2022, providing a forum for ongoing conversations related to the impacts and opportunities of Marinus Link across a broad range of social and heritage topics. Importantly, the Group are supporting the development of the projects' Cultural Values Assessment, looking at both tangible and intangible cultural heritage.

The projects Technical Reference Group includes a representative of Gunaikurnai Land and Waters Corporation, providing a direct link to the EES process. This platform allows a Traditional Owner perspective to be incorporated throughout the development of the project and importantly, how Marinus Link activities through design, then construction, may impact on cultural heritage.

Marinus Link is developing its Cultural Heritage Management Plan and has engaged with all Traditional Owner Groups equally to participate, observe and feed into On Country activities such as walk overs, land

and geotechnical surveys. Traditional Owner presence at these activities, ensures the integrity of practice On Country and provides direct input between Traditional Owners and the project.

Further, we have engaged with Traditional Owners throughout the development of the Marinus Link Sustainability Framework, acknowledging the importance of building and maintaining respectful relationships and working together to deliver positive, sustainable outcomes with the Aboriginal Community.

In addition, the project will consult with Traditional Owners to develop its Indigenous Participation Plan and its first Reconciliation Action Plan, a further commitment to the important work currently underway with Traditional Owners.

4.8 Data Protection and Privacy

Marinus Link is covered by and complies with TasNetwork's Privacy Policy and its associated obligations under The Privacy Act 1988 (Cth) (Privacy Act) and the Personal Information Protection Act 2004 (TAS) (**PIP Act**). For more information go to [Privacy Policy \(tasnetworks.com.au\)](https://www.tasnetworks.com.au/privacy-policy).

5 Key messages

The following high-level key messages have been developed to guide public communications regarding the project. The messages are intended to be used as an 'asset library' drawn on by the Marinus Link team and tailored for public-facing communications channels and collateral as required. The messages will be regularly reviewed to reflect updates to the project.

- Marinus Link is a proposed 1500 megawatt (MW) capacity underground and undersea electricity and telecommunications interconnector between Victoria and Tasmania.
- Marinus Link involves approximately 255 kilometres of undersea High Voltage Direct Current (HVDC) cable across Bass Strait and approximately 90 kilometres of underground HVDC cable in the Gippsland region of Victoria. It will also include converter stations in both Tasmania and Victoria.
- Marinus Link will be built in two 750MW stages with construction commencing in 2025. Stage 1 of the project is due to be in service in 2028-29, and Stage 2 in 2030-31.
- Marinus Link will provide Victoria and other states across the National Electricity Market with access to Tasmania's significant dispatchable renewable energy generation and hydroelectricity storage resources, keeping lights on, reducing emissions and putting downward pressure on prices. It is a two-way connection, allowing excess renewable energy generated in Victoria's rapidly expanding renewable energy zones to be transported to Tasmania's hydro facilities to be stored and deployed as needed.

- Marinius Link also has the added benefit of optical fibre, supporting increased telecommunications and data exchange capacity across Bass Strait.
- It is estimated that Marinius Link will contribute 1,400 indirect and direct jobs and attract \$1.5 billion in investment in the Gippsland region throughout the peak construction phase of the project commencing in 2025. These figures will be similar in Tasmania, making the combined jobs and investment opportunity across Victoria and Tasmania approximately 2,800 direct and indirect jobs and \$3 billion in investment.
- Marinius Link will need to be assessed under Tasmanian, Victorian and Commonwealth environmental planning and assessment processes. Part of the assessment process involves undertaking environmental studies and investigations to understand possible impacts to the environment and mitigations which can be put in place to avoid or minimise these impacts.
- During the environmental assessment process, the community will be consulted on the scope of the assessment, expected impacts and proposed mitigations.
- Underground HVDC cables are the preferred option for Marinius Link in Victoria, as direct current cabling is what is required to cross the marine environment, moving large amounts of energy safely and efficiently over these long distances, and because no new generation is proposed to be directly connected to Marinius Link (which would require alternating current transmission assets).
- Using overhead HVDC would require very high cost lightening protection schemes and wider easements.
- Further information about Marinius Link can be found at marinuslink.com.au or by contacting the project team at team@marinuslink.com.au or 1300 765 275.

6 Stakeholders

Marinus Link is a complex project with many stakeholders. A stakeholder scan was undertaken to identify individuals, groups or organisations who may be impacted by the project or have an interest in the project. The project will continue to work with local Council, communities and key stakeholders to identify additional interested parties who may not be captured in the below list. Stakeholders, their key areas of interest and proposed engagement methods are detailed in this section.

Table 4: Stakeholder, areas of interest and proposed engagement activities

Stakeholder category	Key stakeholders	Areas of interest	Engagement activities
<i>Australian government departments and agencies</i>	Department of Climate Change, Energy, the Environment and Water Department of Industry, Science, Energy and Resources Department of Education, Skills and Employment Australian Maritime Safety Authority (AMSA) Australian Fisheries Management Authority (AFMA)	Planning and approvals, including community consultation Environment & Cultural Heritage Energy supply and security Jobs Cost to customers	Meetings Project updates Formal submissions
<i>Federal MPs</i>	Hon Chris Bowen MP, Minister for Climate Change and Energy Hon Tanya Plibersek MP, Minister for Environment and Water Hon Darren Chester MP (Gippsland) Hon Russell Broadbent MP (Monash)	Planning and approvals, including community consultation Energy supply and security Construction impacts Local Benefits Sharing Program Jobs Cost to customers	Briefings Project updates
<i>State MPs</i>	Hon Lily D'Ambrosio Minister for Climate Action, Minister for Energy and Resources, Minister for State Electricity Commission	Planning and approvals, including community consultation Energy supply and security	Briefings Project updates

	<p>Hon Sonya Kilkenney, Minister for Planning Mr Danny O'Brien (Gippsland South) Mr Martin Cameron (Morwell) Mr Tim Bull (Gippsland East) Ms Jordan Crugnale (Bass) Ms Melina Bath (Eastern Victoria) Mr Jeff Bourman (Eastern Victoria) Renee Heath (Eastern Victoria) Tom McIntosh (Eastern Victoria) Ms Harriet Shing (Eastern Victoria)</p>	<p>Construction impacts Local Benefits Sharing Program Jobs Cost to customers</p>	
<p><i>Victorian government departments and agencies</i></p>	<p>Department of Energy, Environment and Climate Action Department of Transport and Planning Department of Jobs, Precincts and Regions Heritage Victoria Environmental Protection Agency (EPA) First Peoples – State Relations Victorian Fishing Authority Maritime Safety Victoria Marine and Safety Tasmania (MAST) Parks Victoria Gippsland Ports West Gippsland Catchment Management Authority*</p>	<p>Planning and approvals, including community consultation Environment & Cultural Heritage Construction impacts and management Energy supply and security Jobs Cost to customers</p>	<p>Meetings Project updates Formal submissions Stakeholder Liaison Group*</p>
<p><i>Local councils</i></p>	<p>Latrobe City Council South Gippsland Shire Council</p>	<p>Planning and approvals, including community consultation Environment & Cultural Heritage Construction impacts Local Benefits Sharing Program Jobs</p>	<p>Meetings Project updates Presentations Stakeholder Liaison Group</p>
<p><i>Local industry and advocacy organisations</i></p>	<p>Committee for Gippsland*</p>	<p>Jobs</p>	<p>Presentations</p>

	<p>GROW Gippsland*</p> <p>Latrobe City Business Tourism Association</p> <p>Victorian Farmers Federation (VFF)</p>	<p>Community consultation</p> <p>Energy supply and security</p> <p>Cost to customers</p> <p>Local Benefits Sharing Program</p>	<p>Project Updates</p> <p>Phone calls and emails</p>
<p><i>Utilities/service providers/ other project proponents</i></p>	<p>Australian Energy Market Operator (AEMO)</p> <p>Gippsland Water</p> <p>South Gippsland Water</p> <p>Southern Rural Water</p> <p>AusNet Services</p> <p>nbn</p> <p>Keppel Infrastructure Trust (Basslink operator) Basslink Pty Ltd</p> <p>OSMI – Delburn Windfarm Development</p> <p>Star of the South</p> <p>Telstra</p> <p>Gas pipeline owners</p>	<p>Interface with their infrastructure program</p> <p>Construction impacts</p> <p>Local Benefits Sharing Program and economic development opportunities</p>	<p>Project updates</p> <p>Meetings</p> <p>Stakeholder Liaison Group*</p>
<p><i>Traditional Custodians and local Indigenous groups</i></p>	<p>Gunaikurnai Land and Waters Aboriginal Corporation*</p> <p>Bunurong Land Council Aboriginal Corporation</p> <p>Boonwurrung (Boonwurrung) Land and Sea Council</p>	<p>Planning and approvals, including consultation</p> <p>Environment & Cultural Heritage</p> <p>Construction impacts</p> <p>Local Benefits Sharing Program</p> <p>Jobs</p>	<p>Meetings</p> <p>Project updates</p> <p>TRG</p> <p>Aboriginal Advisory Group</p> <p>Stakeholder Liaison Group*</p>
<p><i>Environmental groups</i></p>	<p>Gippsland Agriculture Group</p> <p>Latrobe Sustainability Group</p> <p>Field Naturalists Club of Victoria</p> <p>Voices of the Valley</p> <p>Gippsland Climate Change Network</p> <p>Responsible Renewables</p> <p>Friends of the Prom</p> <p>South Gippsland Landcare Network</p>	<p>Planning and approvals, including community consultation</p> <p>Environment & Cultural Heritage Program</p> <p>Construction impacts</p> <p>Local Benefits Sharing Program</p>	<p>Meetings</p> <p>Project updates</p> <p>Information sessions</p> <p>Community webinars</p> <p>Stakeholder Liaison Group</p>

	<p>Yes 2 Renewables South Gippsland Conservation Society Preserve our Forests Mirboo North Victorian Climate Action Network Environment Victoria Birdlife Australia</p>		
<i>Community groups</i>	<p>Sandy Point Community Group Sandy Point Foreshore Committee of Management Waratah Bay Community Association Waratah Bay Surf Life Saving Club Sandy Point Marine Rescue Service South Coast Boardriders Club Grand Ridge Rail Trail Committee of Management Friends of Grand Ridge Trail Meeniyan Progress Association Mirboo Country Development Inc. Mirboo North and District Community Foundation South Gippsland Action Group Dumbalk and District Progress Association Fish Creek Community Development Group</p>	<p>Planning and approvals, including community consultation Environment & Cultural Heritage Program Construction impacts Local Benefits Sharing Program Jobs</p>	<p>Meetings Project updates Information sessions Community webinars Stakeholder Liaison Group</p>
<i>Impacted community and landowners</i>	<p>Hancock Victorian Plantations Impacted private landowners Residents and businesses near the preferred route Broader Gippsland/ South Gippsland community Crown land managers</p>	<p>Planning and approvals, including community consultation Access and licences Environment & Cultural Heritage Program Construction impacts Cost to customers Compensation Local Benefits Sharing Program</p>	<p>Meetings Project updates Information sessions Community webinars</p>

<p><i>Harder to reach groups</i></p>	<p>Centre for Multicultural Youth Interchange Gippsland Yooralla Gippsland Multicultural Services Inc</p>	<p>Cost to customers Local Benefits Sharing Program</p>	<p>Project updates</p>
<p><i>Maritime industries and groups</i></p>	<p>Seafood Industry Victoria South East Trawl Fishing Industry Association (SETFIA) 3D Oil Exxon Mobil Hibiscus Petroleum Lakes Oil GB Energy Beach Energy Tasmanian Seafood Industry Council VR Fish Infraco (Telstra fibre optic cable asset managers) Optus (Indigo asset managers) Australian Southern Bluefin Tuna Industry Association Corner Inlet Fish Habitat Association Commonwealth Fisheries Association Tropical Tuna Management Advisory Committee Eastern Victorian Rock Lobster Industry Association Eastern Zone Abalone Industry Association San Remo Fishing Cooperative Scallop Fishermen’s Association of Tasmania Small Pelagic Fishery Resource Assessment Group Sustainable Shark Fishing Association Small Pelagic Fishery Industry Association South Gippsland Game Fishing Club Southern Shark Industry Alliance Sustainable Shark Fishing Association (SSFAssn) Tasmanian Abalone Council</p>	<p>Planning and approvals, including consultation Environment & Cultural Heritage Program Construction impacts Operation and maintenance Impacts to fishing grounds</p>	<p>Bass Strait survey activity notifications and updates Project updates Meetings Stakeholder Liaison Group</p>

	<p>Tasmanian Game Fishing Association Sports Fishing Club of Tasmania Mitchelson Fisheries Dr Peter Gill, Blue Whale Study Lakes Entrance Fisherman's Co-operative Ltd (LEFCOL) Tasmanian Rock Lobster Fishermen's Association Tuna Australia (ETBF Industry Association) Victorian Abalone Council Victorian Bays and Inlets Fisheries Association Victorian Rock Lobster Association (VRLA) Victorian Scallop Fisherman's Association (VSFA)</p>		
<i>Media</i>	<p>Gippsland Times Mirboo North Times Meeniyan Newsletter Latrobe Valley Express Sentinel Times East Gippsland Times ABC News WIN News Gippsland FM (104.7) ABC Gippsland 828 3MFM Marinus Link Facebook page Marinus Link LinkedIn page Marinus Link YouTube page</p>	<p>Project information and route Planning and approvals Construction impacts Construction milestones Local Benefits Sharing Program Jobs Cost to customers</p>	<p>Press releases Project updates</p>

7 Indicative engagement program

An overview of the engagement objectives and activities for each EES phase is detailed in this section. This program will be reviewed regularly and updated as required.

Table 5: EES/EIS Engagement phases, objectives, and activities

Phase	Engagement Objectives	Engagement Activities	Communication tools
Mid-2021 to mid-2022 EES/EIS existing conditions investigations and scoping requirements	<ul style="list-style-type: none"> • Explain the EES/EIS processes, project timelines and opportunities for stakeholders and the community to input into the process • Raise awareness of project benefits and constraints • Help stakeholders and the community to respond to the EES scoping requirements when released • Gather input from stakeholders and the community on existing conditions, environmental issues and opportunities to help guide impact assessments 	<ul style="list-style-type: none"> • Community pop-up sessions (where possible) • Webinars • Ongoing meetings with impacted landowners • Briefings with key stakeholders • Briefings with Bass Strait stakeholders via SETFIA • Establish a local presence and team • Establish Gippsland Stakeholder Liaison Group • Presentations to key stakeholder groups • Attending meetings of established community organisations • Establishment of the Consumer Advisory Panel 	<ul style="list-style-type: none"> • Community newsletters • Fact sheets, maps, infographics, videos and other visual aids • Media and advertising • Website, e-news, and social media • Emails, SMS and phone calls • Engagement reports and summaries
Mid-2022 to mid-2023 EES/EIS impact assessment investigations	<ul style="list-style-type: none"> • Provide information about the project including where community feedback has been considered • Inform stakeholders about the impact assessments and performance requirements • Continue to gather community feedback to identify risks to the project and develop appropriate mitigations • Gather information to inform performance requirements 	<ul style="list-style-type: none"> • Community pop-up sessions • Ongoing meetings with impacted landowners • Briefings with key stakeholders • Regular Gippsland Stakeholder Liaison Group meetings • Presentations to key stakeholder groups as needed • Attending meetings of established community organisations • Consumer Advisory Panel engagements 	<ul style="list-style-type: none"> • Community newsletters • Fact sheets, maps, infographics, videos and other visual aids • Media and advertising • Website, e-news, and social media • Emails, SMS and phone calls • Engagement reports and summaries

<p>Late 2023 to early 2024 Preparation of the EES/EIS, public exhibition and inquiry</p>	<ul style="list-style-type: none"> • Inform stakeholders and the community about the findings in the EES/EIS and associated studies • Raise awareness with stakeholders and the community about the public exhibition process and how they can provide written submissions • Provide stakeholders and the community the opportunity to provide feedback on impacts and mitigations • Help stakeholders and the community find information in the EIS/EES relevant to their interests and concerns • Submissions will be considered by the inquiry panel and inform its recommendations to the Minister for Planning. Work with the TRG to respond to any inquiries, issues or concerns 	<ul style="list-style-type: none"> • EES/EIS Statutory Exhibition • Support activities undertaken by DELWP • Community pop-up sessions • Ongoing meetings with impacted landowners • Briefings with key stakeholders • Attending meetings of established community organisations <p>Marinus Link will prepare responses to submission issues for consideration by the inquiry.</p>	<ul style="list-style-type: none"> • Community newsletters • Fact sheets, maps, infographics, videos and other visual aids • Media and advertising • Website, e-news, and social media <p>Engagement reports and summaries</p>
<p>Mid-2024 to late 2024 Assessment of EES and decision</p>	<ul style="list-style-type: none"> • Inform stakeholders on outcomes of Minister's assessment • Engage with agencies and decision makers on the outcomes of the Ministers Assessment • Communicate next steps to obtain project approvals and opportunities for future engagement 	<ul style="list-style-type: none"> • Ongoing meetings with impacted landowners • Briefings with key stakeholders • Regular Gippsland Stakeholder Liaison Group meetings • Attending meetings of established community organisations 	<ul style="list-style-type: none"> • Community newsletters • Media and advertising • Website, e-news, and social media <p>Emails, SMS and phone calls</p>

8 Health and Safety

Marinus Link will comply with State Government or Australian Government directives associated with COVID-19 restrictions, and TasNetwork's Occupational Health and Safety guidelines when planning for and delivering activities outlined within this consultation plan.

9 Evaluation and reporting

Throughout the life of the project including during EIS/EES engagement, engagement and communication activities will be evaluated to understand their effectiveness.

The Technical Reference Group, made up of government agencies with a statutory, policy or technical interest in the project, will provide expert feedback to technical reports and at project meetings. Feedback gathered from the TRG will assist in the development of the EES process.

Measurements for communication and engagement activities will include surveys after engagement activities where people can rate the topics and style of engagement to indicate whether it met their requirements and expectations. Feedback received throughout the engagement program will be shared into the EES process and support the development of accessible and accurate collateral.

For an engagement activity to be considered a success, the following criteria should be met:

- Engagement advertised through at least three different channels (social media, letterbox drop, telephone call, local paper, door knock, word of mouth, website etc)
- The majority of survey respondents rate the topics discussed as interesting or relevant (if applicable for the event)
- The majority of survey respondents score the overall engagement activity above a 5 (if applicable for the event)

After each phase of engagement, a review will be undertaken of the feedback from the engagement sessions to determine whether activities are meeting the needs and expectations of the community.

Engagement plans and strategies will be reviewed after each phase and activities updated to reflect the latest feedback from the community and stakeholders about what works and what doesn't.

Methods used to evaluate the effectiveness of engagement and communication activities include:

- Surveys and feedback forms
- Stakeholder feedback (formal and informal)
- Website metrics
- Social media metrics
- Media monitoring.

9.1 Monitoring and responding to feedback

All stakeholder interactions and enquiries are recorded in Marinus Link's secure customer relationship management software. This allows the project to track enquiries and feedback and ensure they are

addressed in a timely manner. Marinius Link also uses the software to develop monthly reports which help to identify emerging themes and issues among stakeholders.

Marinius Link is developing a Public Enquiries and Complaints Management Procedure, which will be available and communicated over the coming months.

9.2 Consultation report

A consultation report will be produced at the end of EES preparation to summarise what activities were undertaken, what we heard and how this feedback was considered as part of the project and EES process. This report will be submitted as part of the EES process and published on the Marinius Link website.