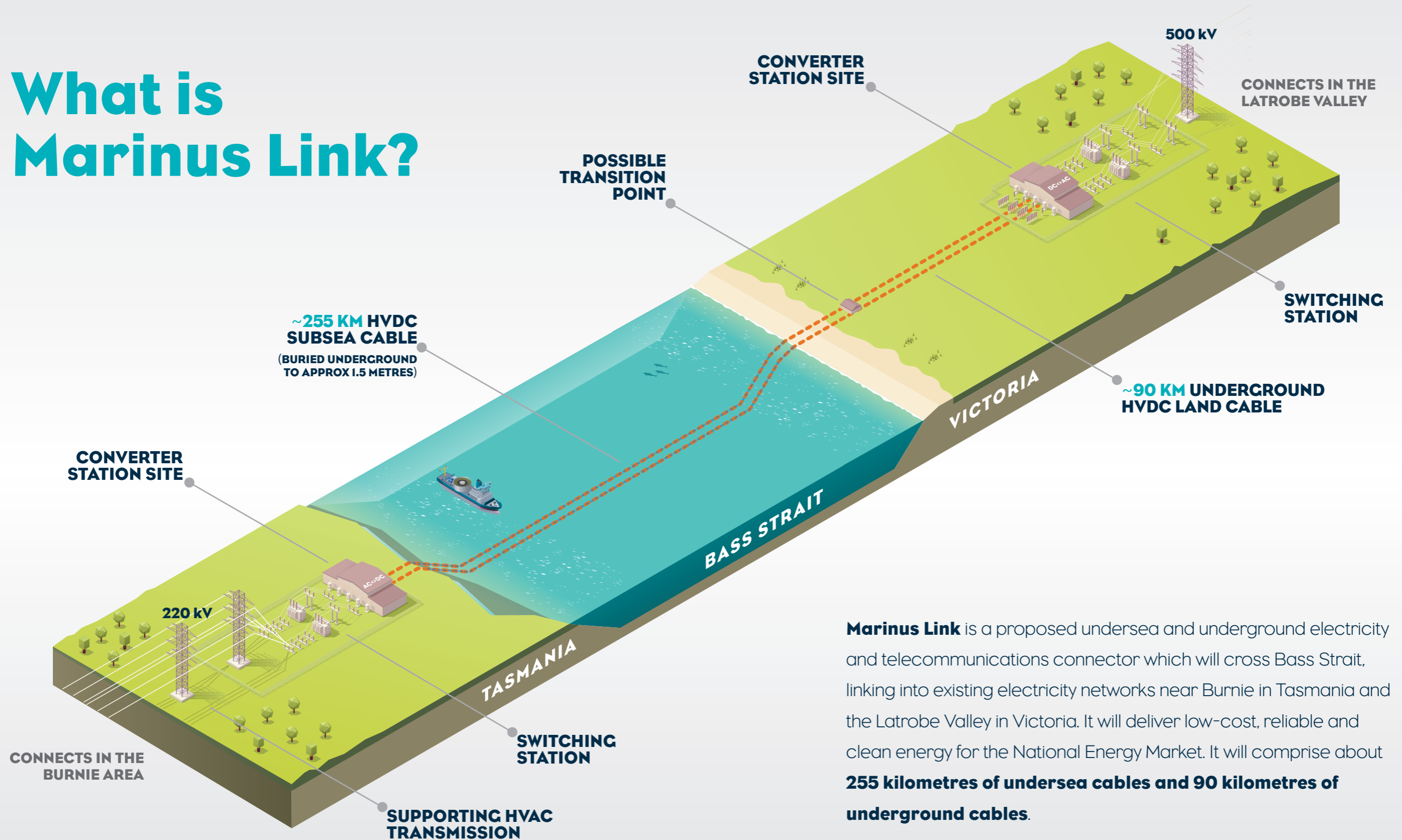


What is Marinus Link?



Marinus Link is a proposed undersea and underground electricity and telecommunications connector which will cross Bass Strait, linking into existing electricity networks near Burnie in Tasmania and the Latrobe Valley in Victoria. It will deliver low-cost, reliable and clean energy for the National Energy Market. It will comprise about **255 kilometres of undersea cables and 90 kilometres of underground cables.**

Not to scale - Indicative artist's impression for illustrative purposes only.

MARINUS
LINK