

MARINUS



LINK

DELIVERING LOW COST,
RELIABLE AND CLEAN ENERGY



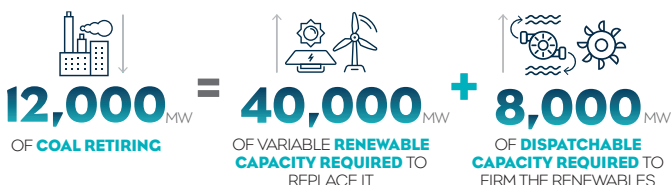
WHAT IS MARINUS LINK?

Marinus Link is a proposed 1500 megawatt capacity undersea and underground electricity connection to more strongly link Tasmania and Victoria as part of Australia's future electricity grid.

THE NATIONAL ELECTRICITY MARKET IS CHANGING

Coal generation continues to retire with variable renewable generation, such as wind and solar generation, increasingly taking its place. To support these variable energy sources, the National Electricity Market (NEM) also needs 'dispatchable' energy that can be available on-demand, such as hydro and pumped hydro energy storage resources.

BY 2035:

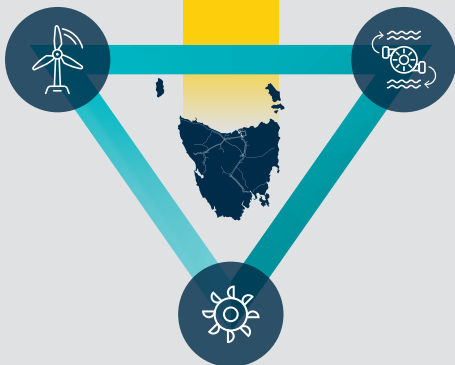


Tasmania has some of Australia's most cost-effective renewable energy and dispatchable capacity resources.

COMPARED WITH MAINLAND AUSTRALIA:

Tasmanian wind has a **25% higher energy output** and capital cost is comparable

Capital cost of pumped hydro energy systems in Tasmania is **30% lower**

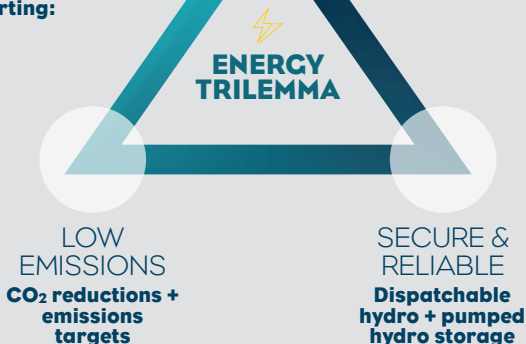


Tasmania has latent, clean and dispatchable hydro capacity **ready to use**

Marinus Link and supporting transmission will help Australia's transition to a low emissions future. They will unlock Tasmania's renewable energy and long-duration energy storage resources to provide dispatchable energy when it's needed.

LOW COST
Wind, solar, hydro
and storage

Together they will help address Australia's energy trilemma by supporting:



BROADER BENEFITS

Marinus Link and supporting transmission will add significant economic value to regional communities in Tasmania and Victoria.



JOBS FIGURES ARE ESTIMATED FOR THE PERIOD SPANNING 2025-27. ALL FIGURES ARE ESTIMATES BASED ON ERNST & YOUNG MODELLING NOVEMBER 2019.

They will also unlock a pipeline of investment in renewable energy and long-duration energy storage developments with an estimated value of up to \$5.7 billion and an estimated 2,350 jobs.

Jobs figure is the estimated average of direct and indirect jobs at peak construction for the period spanning from 2030 to 2034.



Marinus Link and supporting transmission are estimated to reduce at least 45 million tonnes of CO₂ emissions from the NEM by 2050

WORKING OUT WHO PAYS

New pricing arrangements will need to be agreed to achieve fair pricing outcomes. A fair cost allocation methodology for interconnectors is being investigated by the national Energy Security Board. An appropriate pricing outcome is required for Marinus Link and supporting transmission to proceed.

A FEASIBLE PROJECT

Analysis shows that Marinus Link and supporting transmission:

- ◇ Have a positive business case
- ◇ Are technically feasible and commercially viable for up to 1500 MW and will provide greater benefits than costs
- ◇ Could be in service from 2027
- ◇ Will create billions in economic growth, thousands of jobs, and be a source of skills, training and workforce development potential in Tasmania and regional Victoria

WHAT WILL MARINUS LINK COST?

Analysis to date estimates Marinus Link and supporting transmission would have a total project cost of around \$3.5 billion in today's (2019) dollars. This estimate includes allowances to reflect the present level of accuracy and contingencies that may arise.

DO THE BENEFITS OUTWEIGH THE COSTS?

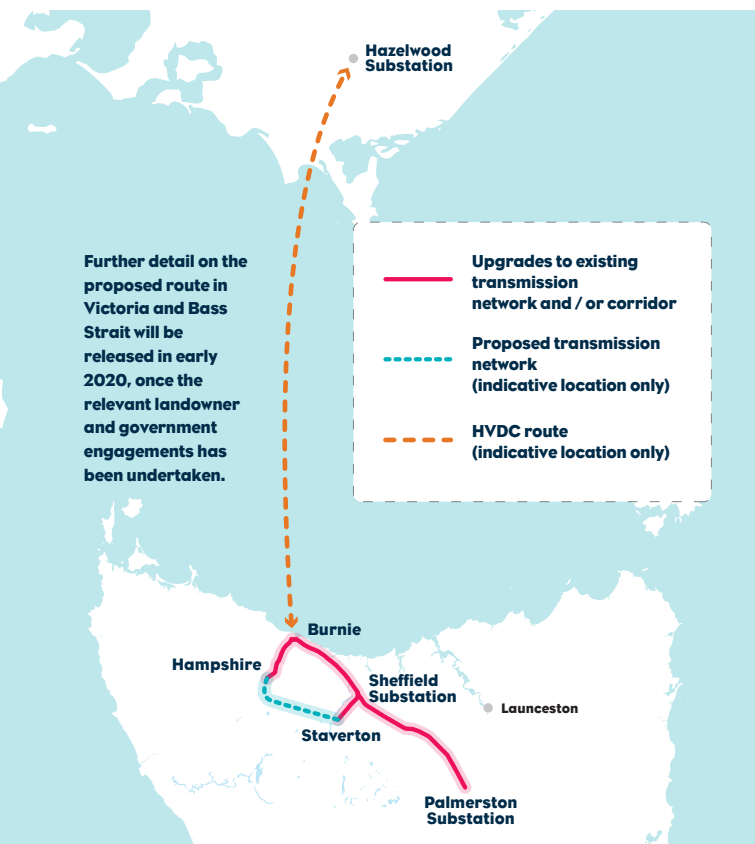
Yes. The economic analysis demonstrates that Marinus Link and supporting transmission will provide an economic advantage to Australia, with benefits significantly outweighing costs under all modelled scenarios.

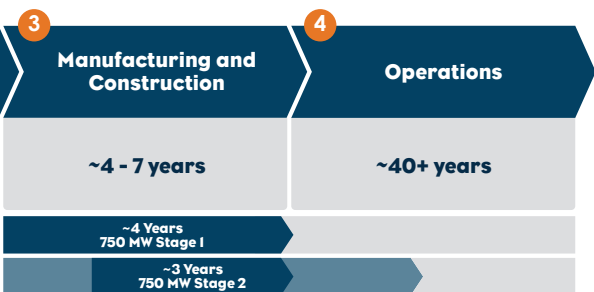
For more information see the Project Marinus Business Case Assessment Report, available here: [**marinuslink.com.au/business-case-assessment**](https://marinuslink.com.au/business-case-assessment)



WHERE WILL IT GO?

A route has been identified that has sought to minimise adverse impacts on landowners, businesses and conservation areas whilst balancing key objectives of cost, efficiency and constructability. To date, work indicates that the identified routes for Marinus Link and supporting transmission are feasible.

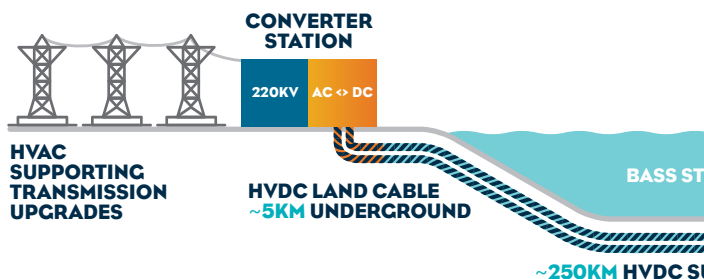




WHAT ARE THE TECHNICAL SPECIFICATIONS?

The favoured technical design is for a 1500 MW High Voltage Direct Current (HVDC) interconnector, built in two 750 MW links and supported by an upgraded High Voltage Alternating Current (HVAC) transmission network in North West Tasmania. The design includes modern HVDC cable and converter station technologies that support reliable power transfers across Bass Strait.

TASMANIA CONNECTS IN BURNIE AREA



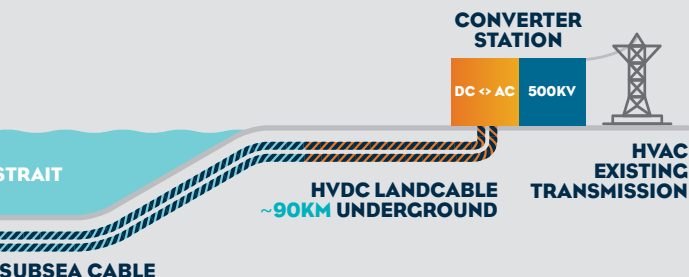


Marinus Link and supporting transmission have a positive business case. Work continues to progress this critical national infrastructure to being a 'shovel ready' project, able to be in service from 2027. TasNetworks is committed to working with stakeholders and local communities and to promoting opportunities to provide feedback and comment on the project.

GET IN TOUCH

To learn more about Marinus Link, share your ideas and find out about upcoming stakeholder and community engagement events visit marinuslink.com.au, email team@marinuslink.com.au, or call **1300 765 275**.

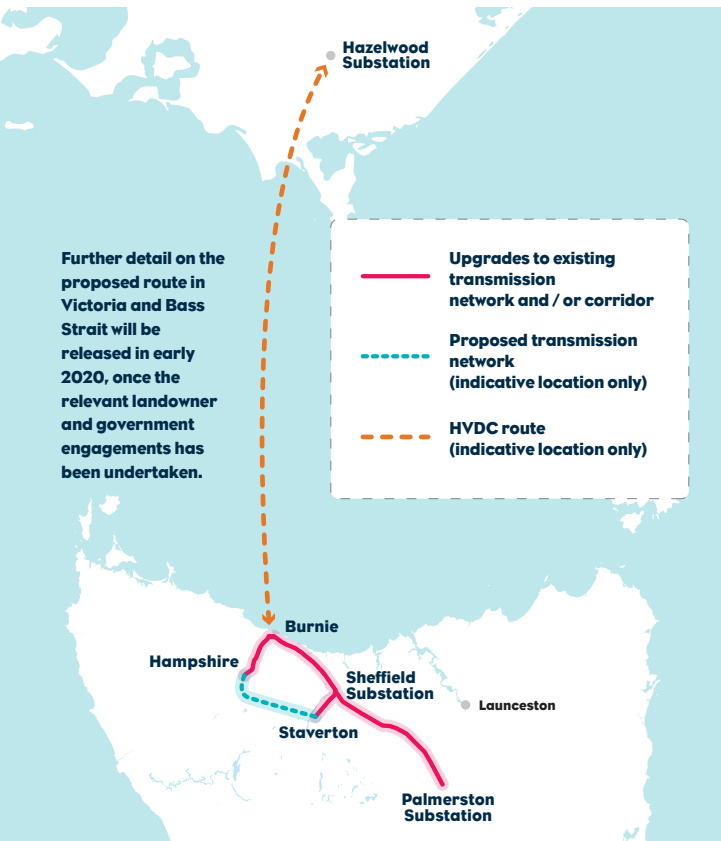
VICTORIA
CONNECTS IN HAZELWOOD





WHERE WILL IT GO?

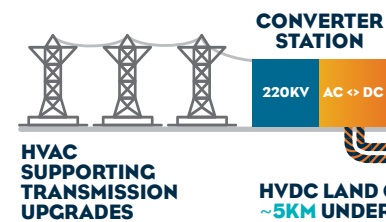
A route has been identified that has sought to minimise adverse impacts on landowners, businesses and conservation areas whilst balancing key objectives of cost, efficiency and constructability. To date, work indicates that the identified routes for Mariner Link and supporting transmission are feasible.



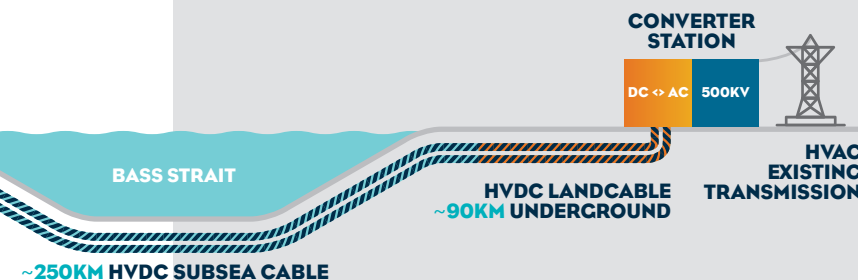
WHAT ARE THE TECHNICAL SPECIFICATIONS?

The favoured technical design is for a 1500 MW High Voltage Direct Current (HVDC) interconnector, built in two 750 MW links and supported by an upgraded High Voltage Alternating Current (HVAC) transmission network in North West Tasmania. The design includes modern HVDC cable and converter station technologies that support reliable power transfers across Bass Strait.

TASMANIA CONNECTS IN BURNIE AREA



VICTORIA CONNECTS IN HAZELWOOD



MARINUS
LINK

Mariner Link and supporting transmission have a positive business case. Work continues to progress this critical national infrastructure to being a 'shovel ready' project, able to be in service from 2027. TasNetworks is committed to working with stakeholders and local communities and to promoting opportunities to provide feedback and comment on the project.

GET IN TOUCH

To learn more about Mariner Link, share your ideas and find out about upcoming stakeholder and community engagement events visit marinuslink.com.au, email team@marinuslink.com.au, or call **1300 765 275**.

MARINUS
LINK

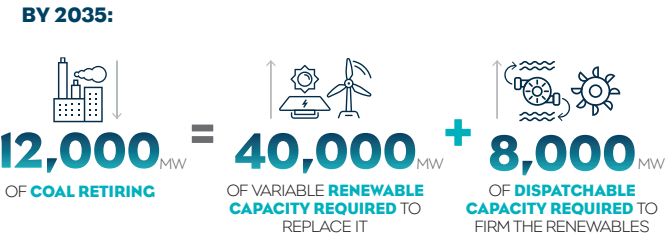
DELIVERING LOW COST,
RELIABLE AND CLEAN ENERGY

WHAT IS MARINUS LINK?

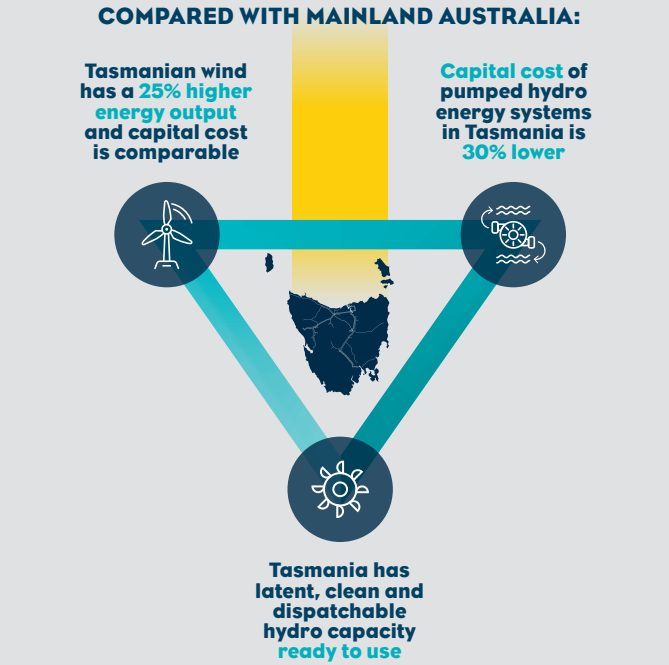
Marinus Link is a proposed 1500 megawatt capacity undersea and underground electricity connection to more strongly link Tasmania and Victoria as part of Australia's future electricity grid.

THE NATIONAL ELECTRICITY MARKET IS CHANGING

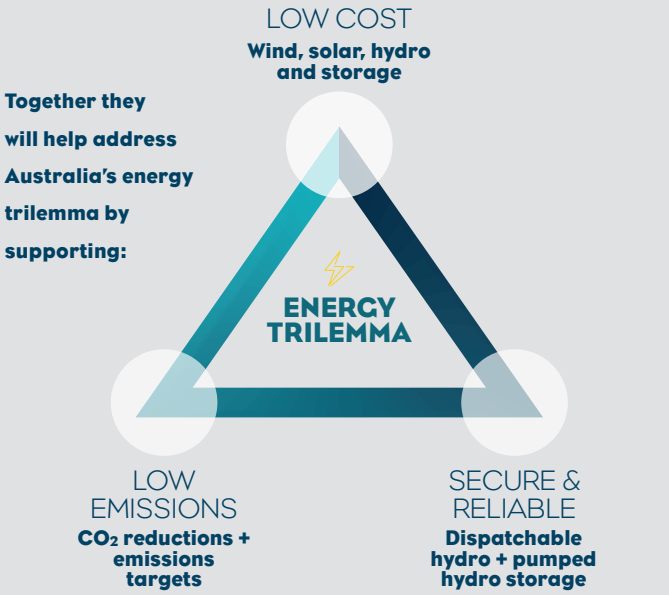
Coal generation continues to retire with variable renewable generation, such as wind and solar generation, increasingly taking its place. To support these variable energy sources, the National Electricity Market (NEM) also needs 'dispatchable' energy that can be available on-demand, such as hydro and pumped hydro energy storage resources.



Tasmania has some of Australia's most cost-effective renewable energy and dispatchable capacity resources.



Marinus Link and supporting transmission will help Australia's transition to a low emissions future. They will unlock Tasmania's renewable energy and long-duration energy storage resources to provide dispatchable energy when it's needed.



A FEASIBLE PROJECT

Analysis shows that Marinus Link and supporting transmission:

- Have a positive business case
- Are technically feasible and commercially viable for up to 1500 MW and will provide greater benefits than costs
- Could be in service from 2027
- Will create billions in economic growth, thousands of jobs, and be a source of skills, training and workforce development potential in Tasmania and regional Victoria

WHAT WILL MARINUS LINK COST?

Analysis to date estimates Marinus Link and supporting transmission would have a total project cost of around \$3.5 billion in today's (2019) dollars. This estimate includes allowances to reflect the present level of accuracy and contingencies that may arise.

DO THE BENEFITS OUTWEIGH THE COSTS?

Yes. The economic analysis demonstrates that Marinus Link and supporting transmission will provide an economic advantage to Australia, with benefits significantly outweighing costs under all modelled scenarios.

For more information see the Project Marinus Business Case Assessment Report, available here: marinuslink.com.au/business-case-assessment

BROADER BENEFITS

Marinus Link and supporting transmission will add significant economic value to regional communities in Tasmania and Victoria.



JOBS FIGURES ARE ESTIMATED FOR THE PERIOD SPANNING 2025-27. ALL FIGURES ARE ESTIMATES BASED ON ERNST & YOUNG MODELLING NOVEMBER 2019.

They will also unlock a pipeline of investment in renewable energy and long-duration energy storage developments with an estimated value of up to \$5.7 billion and an estimated 2,350 jobs.

Jobs figure is the estimated average of direct and indirect jobs at peak construction for the period spanning from 2030 to 2034.

Marinus Link and supporting transmission are estimated to reduce at least 45 million tonnes of CO₂ emissions from the NEM by 2050

WORKING OUT WHO PAYS

New pricing arrangements will need to be agreed to achieve fair pricing outcomes. A fair cost allocation methodology for interconnectors is being investigated by the national Energy Security Board. An appropriate pricing outcome is required for Marinus Link and supporting transmission to proceed.