

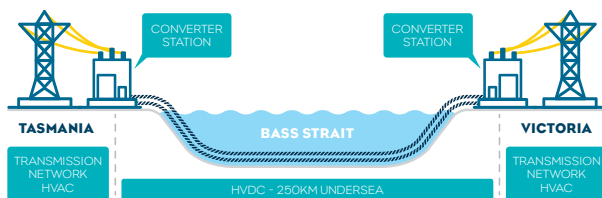
WHERE WILL IT GO?

Between the Latrobe Valley and North-West Tasmania with the following indicative favourable route options.



IS IT TECHNICALLY FEASIBLE?

Yes. Marinus Link will be technically feasible for a capacity of 1200 MW delivered in two 600 MW components.



MARINUS LINK

Initial findings support the need to finalise the Business Case Assessment. The Commonwealth Government has provided \$56 million to progress the project into the Design and Approvals phase.

QUESTIONS AND FEEDBACK?

We welcome your questions and feedback on Marinus Link.

Website projectmarinus.tasnetworks.com.au
Email projectmarinus@tasnetworks.com.au
Call **1300 127 777**

FACT SHEET – 1200 MW MARINUS LINK – JULY 2019

MARINUS LINK

DELIVERING LOW COST,
SECURE & RELIABLE ENERGY

ARENA
Australian Government
Australian Renewable
Energy Agency

TasNetworks
Delivering your power

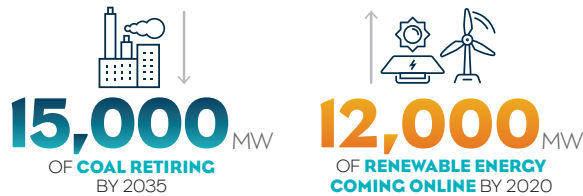
* BASED ON WORK TO DATE FOR A 1200 MW MARINUS LINK

WHAT IS PROJECT MARINUS?

It's a feasibility and business case assessment of a second Bass Strait interconnector, **Marinus Link**, between Tasmania and Victoria.

MARINUS LINK

A 1200 MW link can help **Australia's energy transition** as coal generation continues to retire and renewable generation takes its place.



KEY FINDINGS

Based on findings to date Marinus Link:

- Enables **lower cost, on demand and reliable** renewable generation and **long duration energy storage** from Tasmania to support a transitioning National Electricity Market.
- Supports power **system stability services**, particularly to Tasmania and Victoria.
- Is feasible by 2025** under a number of plausible scenarios.
- Unlocks significant regional-based **jobs, skills and broader economic growth opportunities**.

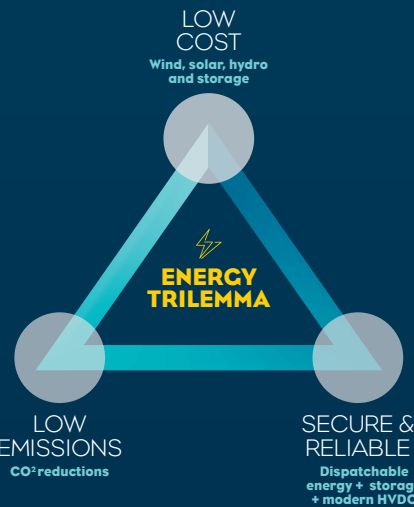
The project should therefore continue so that Marinus Link can be delivered when it is required to **support a transforming energy market**.

WILL THE BENEFITS OUTWEIGH THE COSTS?

Yes under plausible scenarios, like earlier than scheduled coal retirement creating:



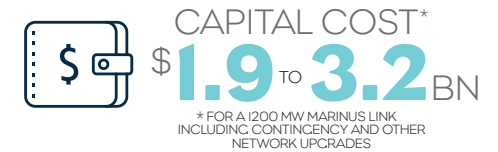
It can help address Australia's **'Energy Trilemma'** by supporting:



WHAT IS THE TIMELINE?

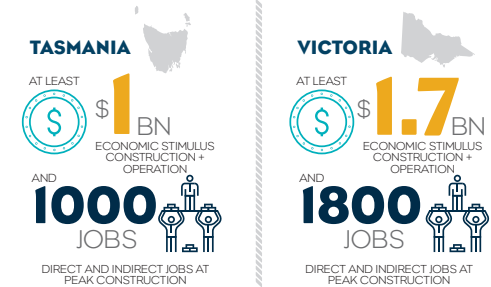


WHAT ARE THE COSTS TO BUILD?



WHAT ARE THE BROADER BENEFITS?

There is significant economic stimulus to regional Tasmania and Victoria.



WHO WILL BENEFIT?

We will seek a model that ensures that **those who benefit from the services of Marinus Link pay for the services.**

